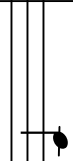


- ①
- ②
- ③
- ④
- ⑤
- ⑥
- ⑦
- ⑧
- ⑨



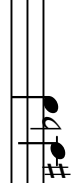
-
-
-
-
-
-
-
-
-

C



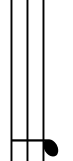
-
-
-
-
-
-
-
-
-

C# Db



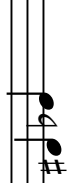
-
-
-
-
-
-
-
-
-

D



-
-
-
-
-
-
-
-
-

(Use slightly less lip pressure)
D# Eb



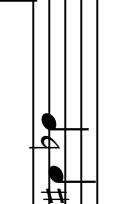
-
-
-
-
-
-
-
-
-
-

C



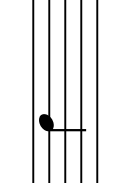
-
-
-
-
-
-
-
-
-
-

C# Db



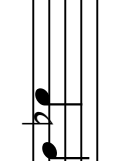
-
-
-
-
-
-
-
-
-

D



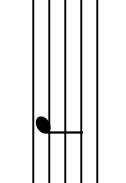
-
-
-
-
-
-
-
-
-
-

D# Eb



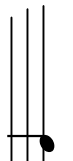
-
-
-
-
-
-
-
-
-
-
-

E

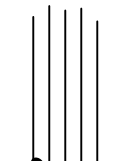


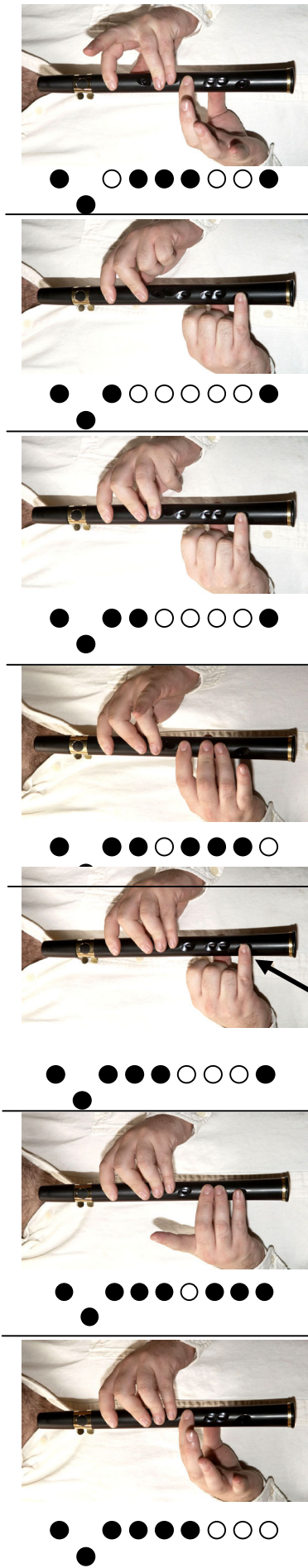
-
-
-
-
-
-
-
-
-
-
-

E



F



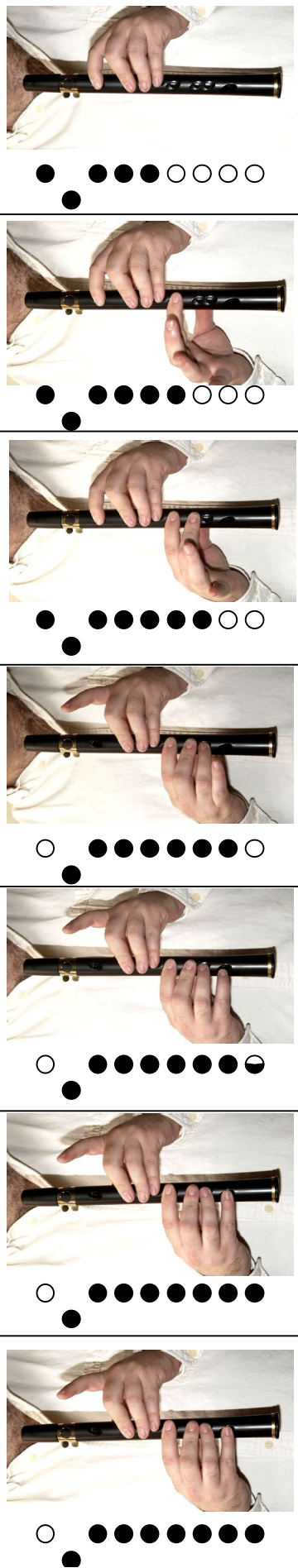


(Right baby finger used only to support the instrument above "G".)

F B

F# Gb A# Bb

A G# Ab



F# Gb * G G# Ab A A# Bb B C

SECOND REGISTER – USE HIGHER OVERTONE